

'THE HS 6242 EVO2, A Versatile Solution For Check-Point Screening'

The **HS 6242 EVO2**, a versatile solution for checkpoint screening. Designed and developed for high-transit areas such as Train Stations, Banks, Hotels, Airports, Casinos, Government Institutes and the like. The **HS 6242 EVO2** is the solution for a wide range of screening applications whilst maintaining industry leading performance and superior detection capabilities.

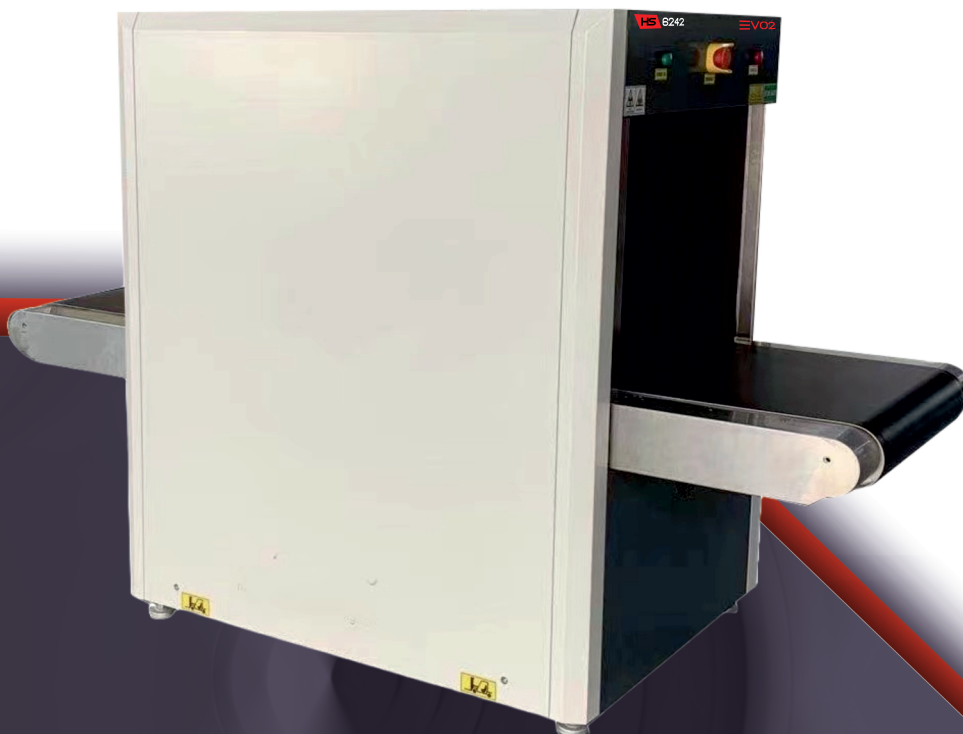
Replacing predecessor 'egacy Range' the all new **HS 6242 EVO2** remains extremely popular due to its versatility and outstanding performance in the field. With all new industry leading optional features such as increased belt speed of up to 0.5m/s, touch screen interface, remote diagnostics capabilities, Artificial Intelligence (AI) and built-In Item Recognition Training Software, the **HS 6242 EVO2** is forging the future of next generation screening technology.

SPECIAL FEATURES

- 5 Years Parts Inclusive Warranty Only
- CIRT (Computer Item Recognition Training Software)
- Compact design
- Ultra-thin object scanning using micro photo sensors
- Self Diagnostics
- Organic / inorganic stripping (Material Discrimination)
- Automatic threat and density alert
- Network ready
- Image archiving

ADDITIONAL EXTRAS

- TIP –Threat Image Projection
- AI- Artificial Intelligence Item Recognition
- Roller tables (entry/exit) built to any length
- UPS (Uninterrupted Power Supply)
- Built-In Item Recognition Training Software
- Touch Screen Interface 21" Monitor
- Tunnel Guards
- Extended Belt Speed to 0.50 M/S



'THE HS 6242 EVO2, A Versatile Solution For Check-Point Screening'

SPECIFICATIONS

GENERAL

Construction:	Steel based
Tunnel Size:	620 mm (W) x 425 mm (H)
Length / Width / Height (mm)	2004 (L) 868 (W) x 1270.5 (H)
	440 Kgs (uncrated)
	520 Kgs (crated)
Conveyor Height:	660 mm
Conveyor Speed:	0.22 meters per second
Maximum Conveyor Load:	200 Kg (evenly distributed)
System Noise Level:	<55 dB

PERFORMANCE INDEX *

Penetration:	36 mm Steel (guaranteed) 38 mm Steel (typical)
Resolution (wire gauge):	40 AWG (guaranteed) 42 AWG (typical)

X-RAY GENERATOR

Tube Voltage:	100 - 160 kV (adjustable) sealed oil bath
Tube Current:	0.3 - 1.2mA (adjustable)
Cooling / Duty Cycle:	Sealed oil cooling / 100%
Beam Launch Angle:	80 degrees

OPERATIONAL INDEX

Storage Temp/Humidity:	-20°C to 50°C 10% - 95% non-condensing
Working Temp/Humidity:	0°C to 45°C 10% - 95% non-condensing
Working Voltage:	AC 220V ± to 10%) 50 Hz / 60 Hz ± 3 Hz
Power:	0.5 kVA
Leakage:	<0.5µ Sv / H
Dose Per Inspection:	<1.5 µ Sv (typical)
Duty Cycle:	100% (no burn in necessary)

IMAGING

- Image resolution: 1280 x 1024 x 24 bits
- Zoom 2x - 64x (dynamic, smooth and continuous)
- Full screen zoom (one click)
- High, low penetration
- Organic / inorganic stripping
- Picture Pure screening technology
- Super edge enhancement capability
- Threat Image Projection Library (TIP)
- Operator assist (OA), automatic threat and density alert
- High Organic Mass Alert (HOMA)
- Automatic 100x screen image recall (last in first out)
- Dual-energy technology
- Colour, black, white, inverse display

IMAGE RECALL

- 500,000 Images storage capacity (standard)
- Image conversion and export to jpg, png and bmp
- Image search and simulated playback
- Printer Ready

ADDITIONAL FEATURES

- 21" High resolution Touch Screen Interface
- (AI) Artificial Intelligence Item Recognition
- Input / Exit Rollers to any length required
- Multi language support
- Network capable
- Training Software- Item Recognition Training Software
- 5 Years Parts Inclusive Warranty Only
- Extended Belt Speed to 0.50 Meters Per Second

COMPLIANCE STANDARDS

- Complies with film safety ISO 1600 / 33 DIN high speed photographic film
- All equipment is CE (Europe) certified and manufactured to ISO 9001:2015 TUV standards, FDA 21CFR- Part 1003/1004 approved for use in the USA.
- Radiation safety: Meets all applicable laws and regulations with respect to X-ray emitting devices, with directives, 2014/30/EC, 2014/35/EC, 2006/42/EC, FDA 21CFR, SAPHRA

*Propriety quality management test piece: Steel Step Wedge, CU wires, Shims, Organic Inorganic, Belt speed 0.20 m/s.

*Approximate Values (Adjustable)

