

'The HS 6040DV EVO2, Advanced Checkpoint Screening Solution'

The **HS 6040 Dual View EVO2** is an advanced checkpoint Baggage X-Ray machine designed and developed for high security application such as Airports, Government Institutes, Embassy, Refineries, Customs, Postal Services and the like. The **HS 6040 DV EVO2** brings together a wide range of technologies developed and adapted for the very best in screening technology and threat detection.

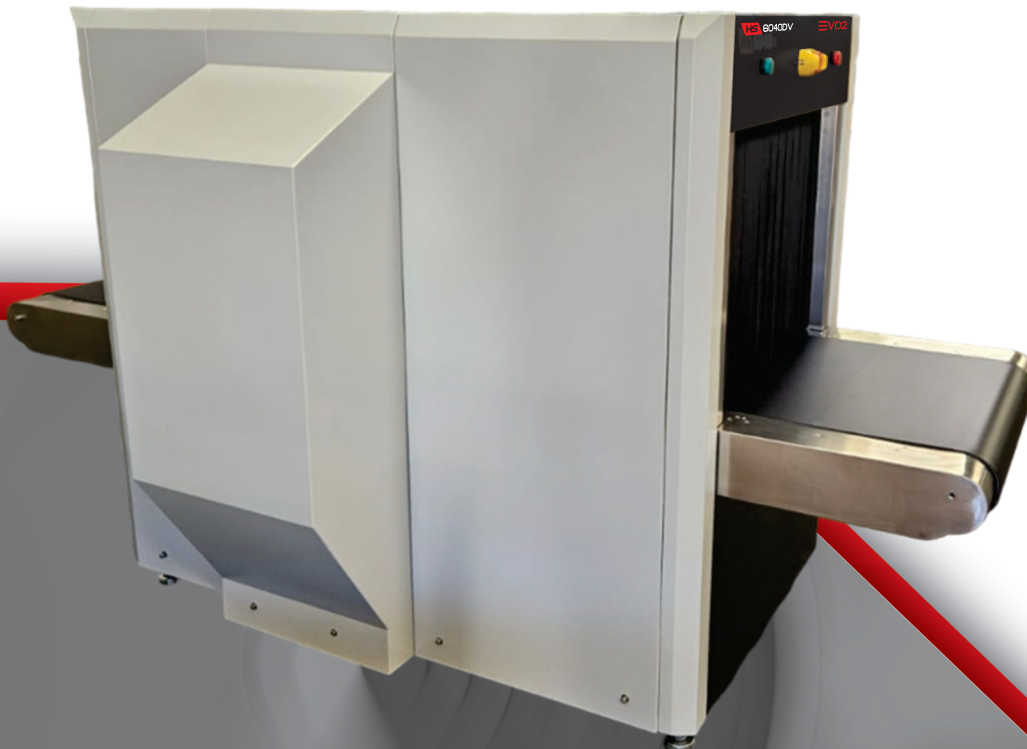
Replacing its predecessor 'egacy Range' the all-new **HS 6040DV EVO2** remains extremely popular due to its ability to keep up with the latest in technology and outstanding performance in the field. With all new industry leading optional features such as increased belt speed of up to 0.5m/s, touch screen interface, remote diagnostics capabilities, Artificial Intelligence (AI) and built-in item Recognition Training Software the **HS 6040DV EVO2** is forging the future of next generation screening technology.

SPECIAL FEATURES

- 5 Years Parts Inclusive Warranty Only
- CIRT (Computer Item Recognition Training Software)
- Dual-View Imaging Technology
- Compact Design
- Self Diagnostics
- Organic / Inorganic Stripping (Material Discrimination)
- Automatic threat and density alert
- Network ready
- Image archiving

ADDITIONAL EXTRAS

- TIP - Threat Image Projection
- (AI) Artificial Intelligence Item Recognition
- Roller tables (entry/exit) built to any length
- UPS (Uninterrupted Power Supply)
- Built-In Item Recognition Training Software
- Touch Screen Interface 21" Monitor
- Tunnel Guards
- Extended Belt Speed to 0.50 M/S



‘The HS 6040DV EVO2, Advanced Checkpoint Screening Solution’

SPECIFICATIONS

GENERAL

Construction:	Steel based
Tunnel Size:	650 mm (W) x 550 mm (H)
Length / Width / Height (mm)	2333 (L) 1170 (W) x 1350 (H)
	590 Kgs (uncrated)
	650 Kgs (crated)
Conveyor Height:	660 mm
Conveyor Speed:	0.22 meters per second
Maximum Conveyor Load:	200 Kg (evenly distributed)
System Noise Level:	<55 dB

PERFORMANCE INDEX *

Penetration:	36 mm Steel (guaranteed) 38 mm Steel (typical)
Resolution (wire gauge):	40 AWG (guaranteed) 42 AWG (typical)

X-RAY GENERATOR

Tube Voltage:	100 - 160 kV (Adjustable) sealed oil bath
Tube Current:	0.3 - 1.2mA (adjustable)
Cooling / Duty Cycle:	Sealed oil cooling / 100%
Beam Launch Angle:	80 degrees
Beam Direction	(1) Vertically Upward and (2) Horizontal

OPERATIONAL INDEX

Storage Temp/Humidity:	-20°C to 50°C 10% - 95% non-condensing
Working Temp/Humidity:	0°C to 45°C 10% - 95% non-condensing
Working Voltage:	AC 220V ± to 10%) 50 Hz / 60 Hz ± 3 Hz
Power:	0.5 kVA
Leakage:	<0.5µ Sv / H
Dose Per Inspection:	<1.5 µ Sv (typical)
Duty Cycle:	100% (no burn in necessary)

IMAGING

- Image resolution: 1280 x 1024 x 24 bits
- Zoom 2 - 64 x (dynamic, smooth and continuous)
- Full screen zoom (one click)
- High, low penetration
- Organic / inorganic stripping
- Picture Pure screening technology
- Super edge enhancement capability
- Threat Image Projection Library (TIP)
- Operator assist (OA), automatic threat and density alert
- High Organic Mass Alert (HOMA)
- Automatic 100x screen image recall (last in first out) Dual energy technology
- Colour, black, white, inverse display

IMAGE RECALL

- 500,000 Images storage capacity (standard)
- Image conversion and export to jpg, png and bmp
- Image search and simulated playback
- Printer ready

ADDITIONAL FEATURES

- 2x21" High resolution Touch Screen Interface
- (AI) Artificial Intelligence Item Recognition on
- Input / Exit Rollers to any length required
- Multi language support
- Network capable
- Training Software - Item Recognition Training Software
- 5 Years Parts Inclusive Warranty Only
- Extended Belt Speed to 0.50 Meters Per Second
- Operator Table

COMPLIANCE STANDARDS

- Complies with film safety ISO 1600 / 33 DIN high speed photographic film
- All equipment is CE (Europe) certified and manufactured to ISO 9001:2015 TUV standards, FDA 21CFR- Part 1003/1004
- approved for use in the USA.
- Radiation safety: Meets all applicable laws and regulations with respect to X-ray emitting devices, with directives, 2014/30/EC, 2014/35/EC, 2006/42/EC, FDA 21CFR, SAPHRA.
- *Proprietary quality management test piece: Steel Step Wedge, CU wires, Shims, Organic Inorganic, Belt speed 0.20 m/s.
- *Approximate Values (Adjustable)

