

'THE HS 1010DV EVO2, Simple, Flexible with Superior Image Quality'

Introducing the all new **HS 1010DV EVO2 (Dual View)** Security X-Ray Inspection System, with advanced screening technology that allows for the x-raying of a wide range of oversized items in two different orientations. Best suited for the screening of air cargo and hold baggage, it is considered to be the preferred size choice for freight forwarders, airports, warehouses, courier companies, customs and borders. Designed with a 1005 mm x 1010 mm tunnel size, the **HS 1010DV EVO2** is one of the more sought after machine types on the market. This unit is built with high definition detectors and state of the art photo sensors that allow for ultra-thin objects placed on the conveyor belt to be picked up and scanned from two different angles.

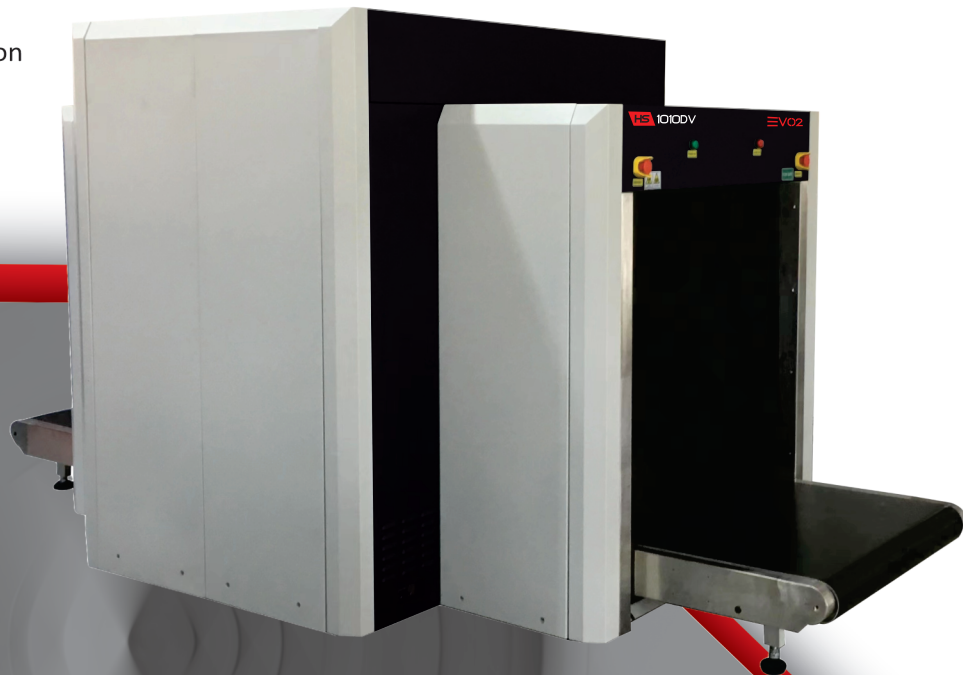
SPECIAL FEATURES

- 5 Years Parts Inclusive Warranty Only
- CIRTIS (Computer Item Recognition Training Software)
- Dual-View Imaging Technology
- Compact design
- Self Diagnostics
- Organic / inorganic stripping (Material Discrimination)
- Automatic threat and density alert
- Network ready
- Image archiving
- TIP – Threat Image Projection

The **HS 1010DV EVO2** provides picture-pure resolution with super enhanced image processing and automatic 100x screen image playback capability. Users can operate the unit with a remote console and monitors up to 10 meters from the machine. The **HS 1010DV EVO2** is the machine of choice for any high throughput operations. In addition to the standard configuration, the **HS 1010DV EVO2** is supplied with a number of extras including TIP (Threat Image Projection), a 5 Year Warranty and 500,000 Image Archiving Capacity.

ADDITIONAL EXTRAS

- AI- Artificial Intelligence Item Recognition
- Roller tables (entry/exit) built to any length
- UPS (Uninterrupted Power Supply)
- Built-In Item Recognition Training Software
- Touch Screen Interface 21" Monitor
- Tunnel Guards
- Extended Belt Speed to 0.50 M/S



'THE HS 1010DV EVO2, Simple, Flexible with Superior Image Quality'

SPECIFICATIONS

GENERAL

Construction:	Steel Based
Tunnel Size:	1005mm (w) x 1010mm (H)
Length / Width / Height (mm)	3595.50 (L) 1685 (W) x 1795 (H)
	1500 Kgs (uncrated)
	1700 Kgs (crated)
Conveyor Height:	300 mm
Conveyor Speed:	>0.22 meters per second
Maximum Conveyor Load:	300 Kg (evenly distributed)
System Noise Level:	<60 dB

PERFORMANCE INDEX *

Penetration:	38 mm Steel (guaranteed) 40 mm Steel (typical)
Resolution (wire gauge):	40 AWG (guaranteed) 42 AWG (typical)

X-RAY GENERATOR

Tube Voltage:	100 - 160 kV (adjustable) sealed oil bath
Tube Current:	0.3 - 1.2mA (adjustable)
Cooling / Duty Cycle:	Sealed oil cooling / 100%
Beam Launch Angle:	80 degrees
Beam Direction:	(1) Vertically Downward and (2) Horizontal

OPERATIONAL INDEX

Storage Temp/Humidity:	-20°C to 50°C 10% - 95% non-condensing
Working Temp/Humidity:	0°C to 45°C 10% - 95% non-condensing
Working Voltage:	AC 220V (± to 10%) 50 Hz / 60 Hz ± 3 Hz
Power:	12 kVA
Leakage:	<0.5µ Sv / H
Dose Per Inspection:	<3 µ Sv (typical)
Duty Cycle:	100% (no burn in necessary)

IMAGING

- Image resolution: 1280 x 1024 x 24 bits
- Zoom 2x - 64x (dynamic, smooth and continuous)
- Full screen zoom (one click)
- High, low penetration
- Organic / inorganic stripping
- Picture Pure screening technology
- Super edge enhancement capability
- Threat Image Projection Library (TIP)
- Operator assist (OA), automatic threat and density alert
- High Organic Mass Alert (HOMA)
- Automatic 100x screen image recall (last in first out)
- Dual-energy technology
- Colour, black, white, inverse display

IMAGE RECALL

- 500,000 Images storage capacity (standard)
- Image conversion and export to jpg, png and bmp
- Image search and simulated playback
- Printer Ready

ADDITIONAL FEATURES

- 2 x 21" High resolution Touch Screen Interface
- (AI) Artificial Intelligence Item Recognition
- Input / Exit Rollers to any length required
- Multi language support
- Network capable
- Training Software- Item Recognition Training Software
- 5 Years Parts Inclusive Warranty Only
- Extended Belt Speed to 0.50 Meters Per Second
- Operator Table

COMPLIANCE STANDARDS

- Complies with film safety ISO 1600 / 33 DIN high speed photographic film
- All equipment is CE (Europe) certified and manufactured to ISO 9001:2015 TUV standards, FDA 21CFR- Part 1003/1004 approved for use in the USA.
- Radiation safety: Meets all applicable laws and regulations with respect to X-ray emitting devices, with directives, 2014/30/EC, 2014/35/EC, 2006/42/EC, FDA 21CFR, SAPHRA.
- *Propriety quality management test piece: Steel Step Wedge, CU wires, Shims, Organic Inorganic, Belt speed 0.20 m/s.
- *Approximate Values (Adjustable)

