

'THE HS 1010 EVO2, Simple, Flexible with Superior Image Quality'

Introducing the all new **HS 1010 EVO2** Security X-Ray Inspection System. A large tunnel unit that allow's for the x-raying of a wide range of oversized items. For the screening of air cargo and hold baggage, it is considered to be the preferred size choice for freight forwarders, airports, warehouses, courier companies & customs. Designed with a 1005 mm x 1010 mm tunnel size, the **HS 1010 EVO2** is one of the more sought after machines on the market.

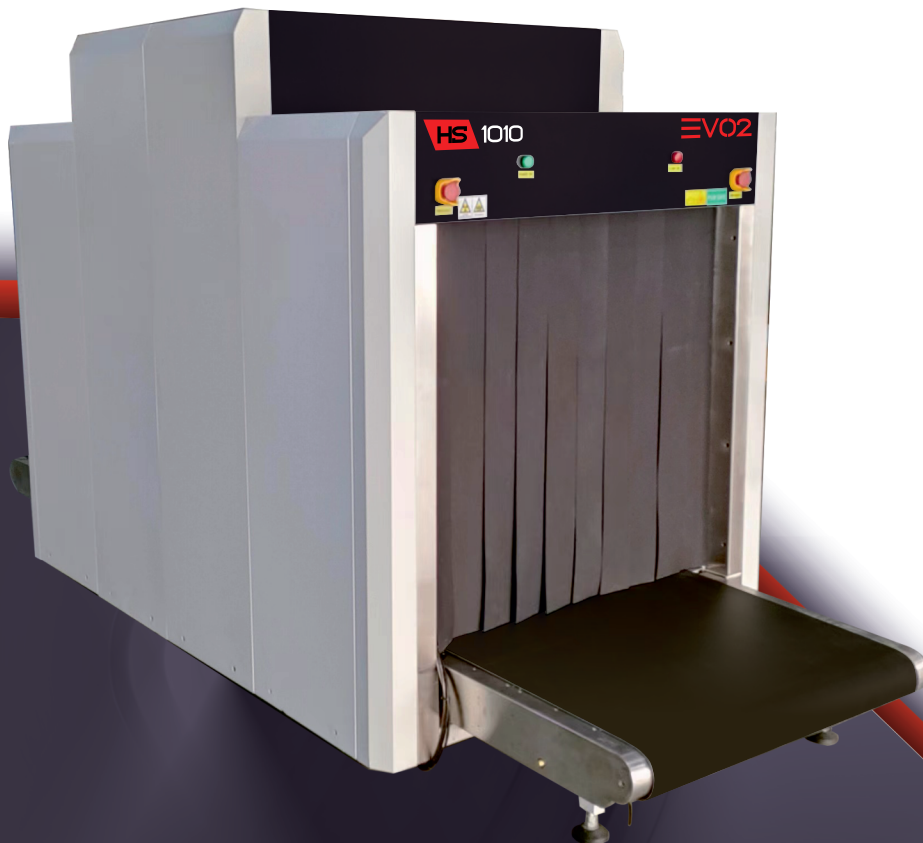
SPECIAL FEATURES

- 5 Years Parts Inclusive Warranty Only
- CIRTIS (Computer Item Recognition Training Software)
- Compact design
- Ultra-thin object scanning using micro photo sensors
- Self Diagnostics
- Organic / inorganic stripping (Material Discrimination)
- Automatic threat and density alert
- Network ready
- Image archiving
- TIP –Threat Image Projection

The **HS 1010 EVO2** is built with high definition detectors and state of the art photo sensors that allow for ultra-thin objects placed on the conveyor belt to be picked up and scanned. The **HS 1010 EVO2** provides picture-pure resolution with super enhanced image processing and automatic 100x screen image playback capability. The **HS 1010 EVO2** is the machine of choice for any high throughput operations. In addition to the standard configuration, the **HS 1010 EVO2** is supplied with a number of extras including TIP (Threat Image Projection), a 5 Year Warranty and 500,000 Image Archiving Capacity.

ADDITIONAL EXTRAS

- AI- Artificial Intelligence Item Recognition
- Roller tables (entry/exit) built to any length
- UPS (Uninterrupted Power Supply)
- Built-In Item Recognition Training Software
- Touch Screen Interface 21" Monitor
- Tunnel Guards
- Extended Belt Speed to 0.50 M/S



'THE HS 1010 EVO2, Simple, Flexible with Superior Image Quality'

SPECIFICATIONS

GENERAL

Construction:	Steel based
Tunnel Size:	1010 mm (W) x 1005 mm (H)
Length / Width / Height (mm)	3336 (L) 1330 (W) x 1795 (H)
	1100 Kgs (uncrated)
	1300 Kgs (crated)
Conveyor Height:	300 mm
Conveyor Speed:	0.22 meters per second
Maximum Conveyor Load:	300 Kg (evenly distributed)
System Noise Level:	<60 dB

PERFORMANCE INDEX *

Penetration:	38 mm Steel (guaranteed) 40 mm Steel (typical)
Resolution (wire gauge):	40 AWG (guaranteed) 42 AWG (typical)

X-RAY GENERATOR

Tube Voltage:	100 - 160 kV (adjustable) sealed oil bath
Tube Current:	0.3 - 1.2mA (adjustable)
Cooling / Duty Cycle:	Sealed oil cooling / 100%
Beam Launch Angle:	80 degrees

OPERATIONAL INDEX

Storage Temp/Humidity:	-20°C to 50°C 10% - 95% non-condensing
Working Temp/Humidity:	0°C to 45°C 10% - 95% non-condensing
Working Voltage:	AC 220V ± to 10%) 50 Hz / 60 Hz ± 3 Hz
Power:	1.0 kVA
Leakage:	<0.5µ Sv / H
Dose Per Inspection:	<1.5 µ Sv (typical)
Duty Cycle:	100% (no burn in necessary)

IMAGING

- Image resolution: 1280 x 1024 x 24 bits
- Zoom 2x - 64x (dynamic, smooth and continuous)
- Full screen zoom (one click)
- High, low penetration
- Organic / inorganic stripping
- Picture Pure screening technology
- Super edge enhancement capability
- Threat Image Projection Library (TIP)
- Operator assist (OA), automatic threat and density alert
- High Organic Mass Alert (HOMA)
- Automatic 100x screen image recall (last in first out)
- Dual-energy technology
- Colour, black, white, inverse display

IMAGE RECALL

- 500,000 Images storage capacity (standard)
- Image conversion and export to jpg, png and bmp
- Image search and simulated playback
- Printer Ready

ADDITIONAL FEATURES

- 21" High resolution Touch Screen Interface
- (AI) Artificial Intelligence Item Recognition
- Input / Exit Rollers to any length required
- Multi language support
- Network capable
- Training Software- Item Recognition Training Software
- 5 Years Parts Inclusive Warranty Only
- Extended Belt Speed to 0.50 Meters Per Second

COMPLIANCE STANDARDS

- Complies with film safety ISO 1600 / 33 DIN high speed photographic film
- All equipment is CE (Europe) certified and manufactured to ISO 9001:2015 TUV standards, FDA 21CFR- Part 1003/1004 approved for use in the USA.
- Radiation safety: Meets all applicable laws and regulations with respect to X-ray emitting devices, with directives, 2014/30/EC, 2014/35/EC, 2006/42/EC, FDA 21CFR, SAPHRA.
- *Propriety quality management test piece: Steel Step Wedge, CU wires, Shims, Organic Inorganic, Belt speed 0.20 m/s. *Approximate Values (Adjustable)

